

Important Diary Dates – Autumn Term

28.9.18 Macmillian coffee morning

15.10.18 Phonics open week

22.10.18 International Week

24.10.18 Harvest Mass

25.10.18 School Closes for Half Term

26.10.18 Inset Day – school closed to pupils

05.11.18 School Opens to pupils – Topic Week

13.11.18 Maths Parent's Evening

14.11.18 Maths Parent's Evening

30.11.18 St Andrew's Day – children wear blue and white

11.12.18 Y1 Christmas Play

19.12.18 Whole School Mass

20.12.18 Christmas Party Afternoon

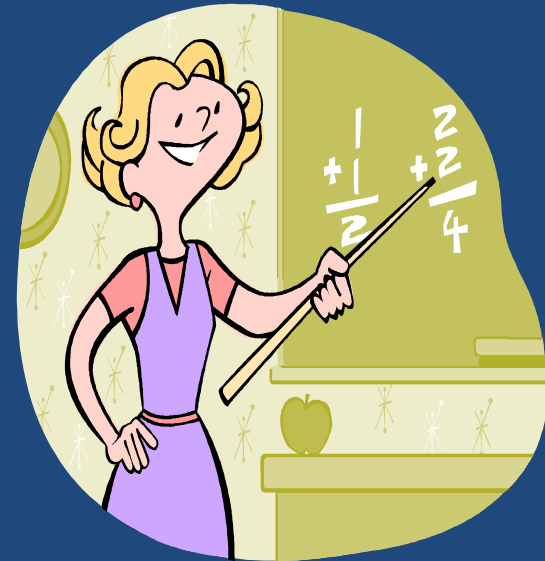
21.12.18 School Closes for Christmas Holiday and reopens on 7th January 2019

Year 1

Parents Welcome Meeting

Staff

- Mrs Kelly
- Miss Ashmore
- Miss Fiddler
- Mrs Clarke
- Mrs Colclough
- Mrs Begum



Reading

- We aim to change class reading books once a week. This is for you to read with your child, they may not be able to read it independently and will require support. Please sign the children's reading record to say you have heard them read.
- In addition, some children will bring a levelled RWI book home which they should be able to read independently.

Read Write Inc

- Some children will be given a RWI reading book each time they finish a new book in class. They are to bring it home and should be able to independently read it to you.
- Always keep this book in their book bag as the teachers will collect it in when they are ready to move onto the next book. This might not always be the same day of the week.

Simple Speed Sounds

Consonant sounds – *stretchy*

f	l	m	n	r	s	v	z	sh	th	ng
										nk

Consonant sounds – *bouncy*

b	c	d	g	h	j	p	qu	t	w	x	y	ch
	k											

Vowel sounds – *bouncy*

a	e	i	o	u	ay	ee	igh	ow
---	---	---	---	---	----	----	-----	----

Vowel sounds – *stretchy*

Vowel sounds – *stretchy*

oo	oo	ar	or	air	ir	ou	oy
----	----	----	----	-----	----	----	----



Read Write
Inc book



Oxford Reading Tree
book.

Common Exception Words

The children are currently being assessed to see what common exception words they know.

The aim is, that with your support, all children in Year 1 will be able to read the common exception words by the end of the Autumn Term. A list of these can be found on the school website. Any problems, ask your child's Teacher.

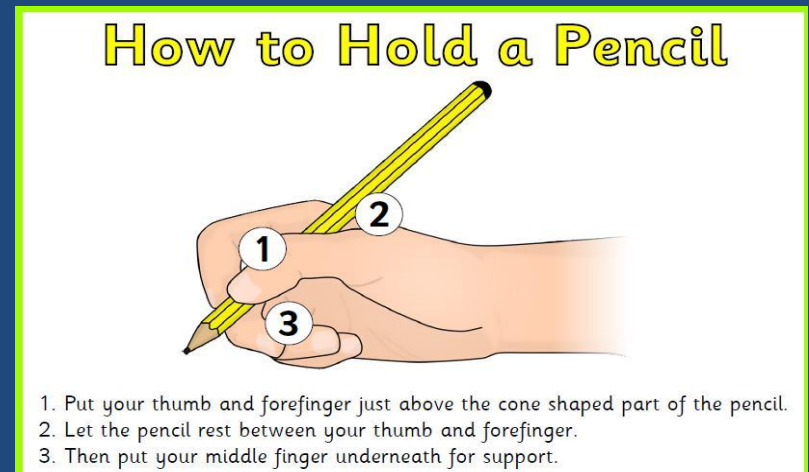
Spring & Summer Term will be spent learning to spell the common exception words.

Writing

At this stage of the year we are actively focusing on your child's ability to form all letters correctly. This includes capital letters and lower case letters.

The children should all be able to write their name with the correct capital and lower case letters and their writing should sit on the line.

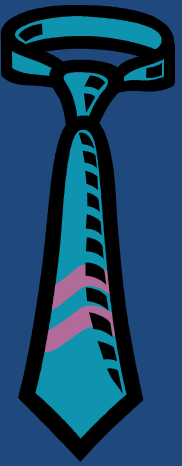
Please practise this at home with your child, encouraging the correct pencil grip.



Uniform

- Children should now be in winter uniform (shirt and tie). Their top button must be fastened.
- Please ensure children are wearing school shoes and not trainers.
- Where possible children should use a blue bag or a bag of similar size in order for it to fit into their drawer. This should be in school every day.
- Children should not be wearing jewellery, watches or big bows or flowers in their hair.
- Please label all uniform items.

PE



- All items should be labelled.
- PE kit should be kept in school for the half term.
- The children may bring in a tracksuit for outdoor P.E. once the weather becomes cooler.
- Please encourage children to do their own laces and ties.





Homework



English

Given out every Tuesday and returned to school on Friday.

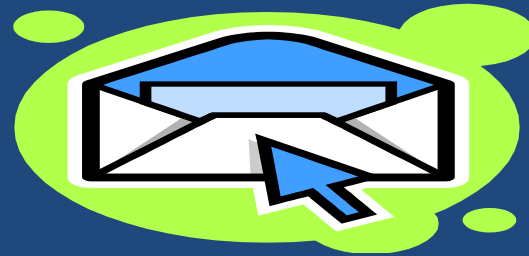
Spellings will also be sent home on Tuesday and the children will be tested on them the following Tuesday, in school.

Maths

Given out every Friday and returned to School on Tuesday.



Other Issues



- Messages to go to a member of staff in the morning at the door.
- It will be helpful if any money is sent in a labelled envelope to the office.
- Please label all clothes.
- Please take home your copy of information for Year One



School Fund

We are asking for a £10 contribution per child. This will cover any trips and visitors in Year One this year.

Thank you for your time and support!

